

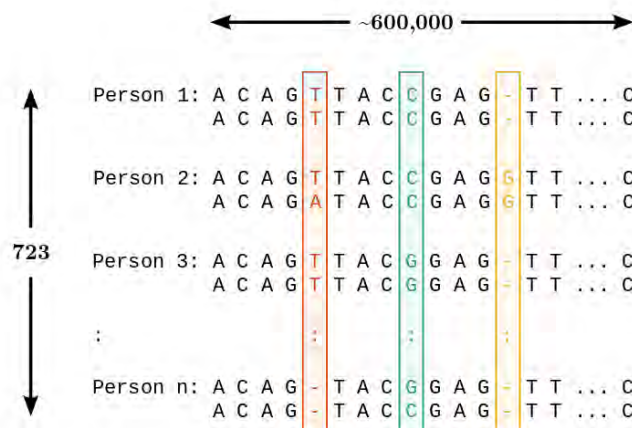
Where Are You From? Genetics, Ancestry, and Geography

Jade Yu Cheng March 31, 2014

Jade Cheng: Where Are You From? Biocultural History, Aarhus University, March 2014

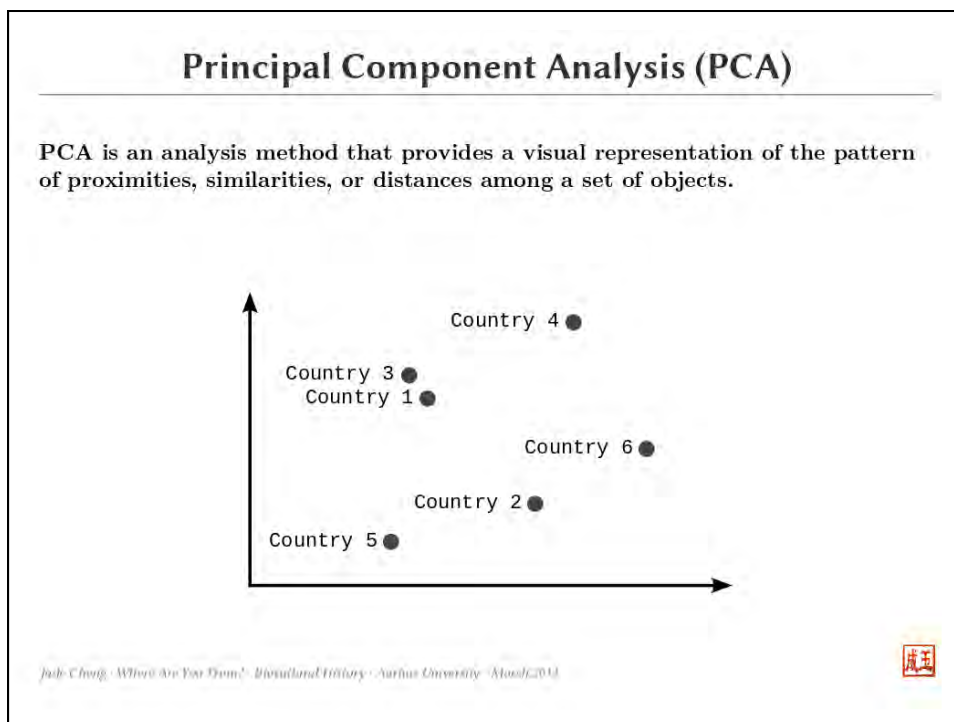
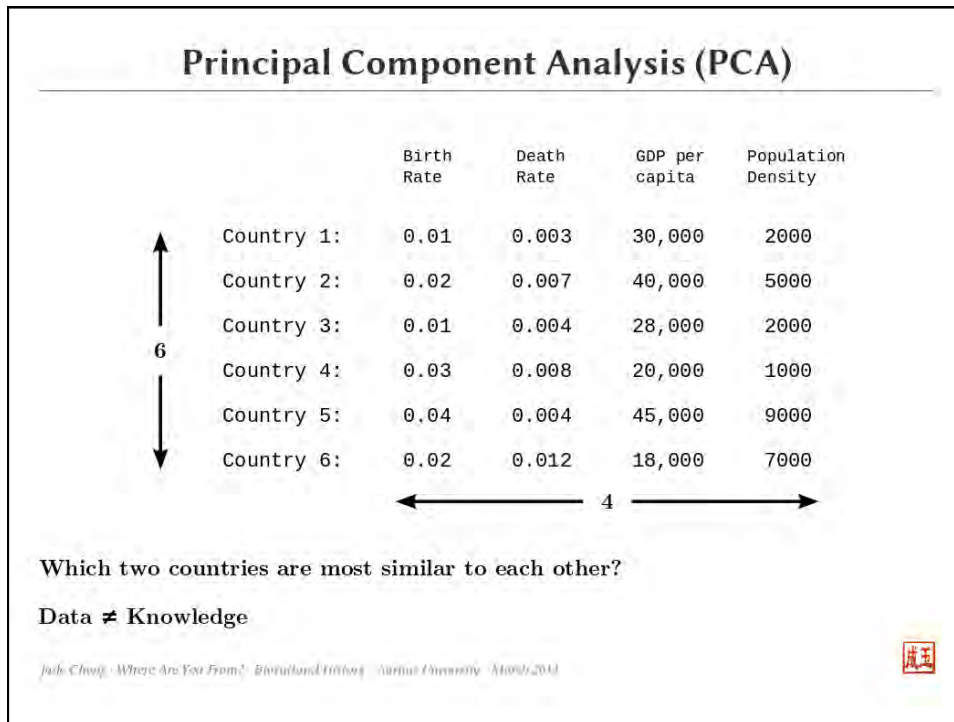


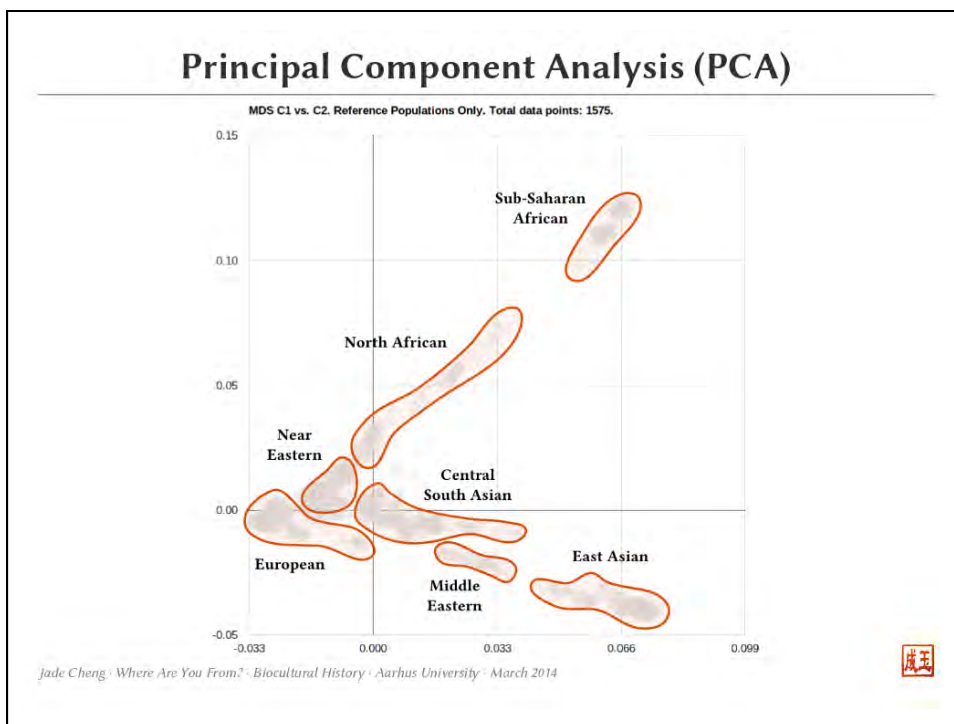
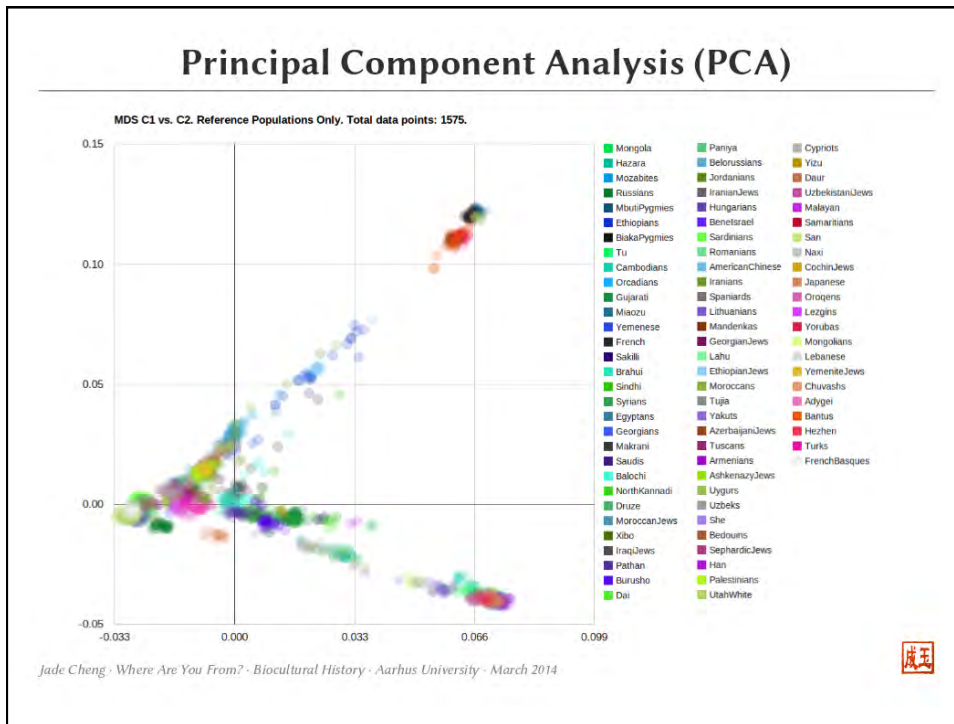
Single-Nucleotide Polymorphism (SNP)



Jade Cheng: Where Are You From? Biocultural History, Aarhus University, March 2014

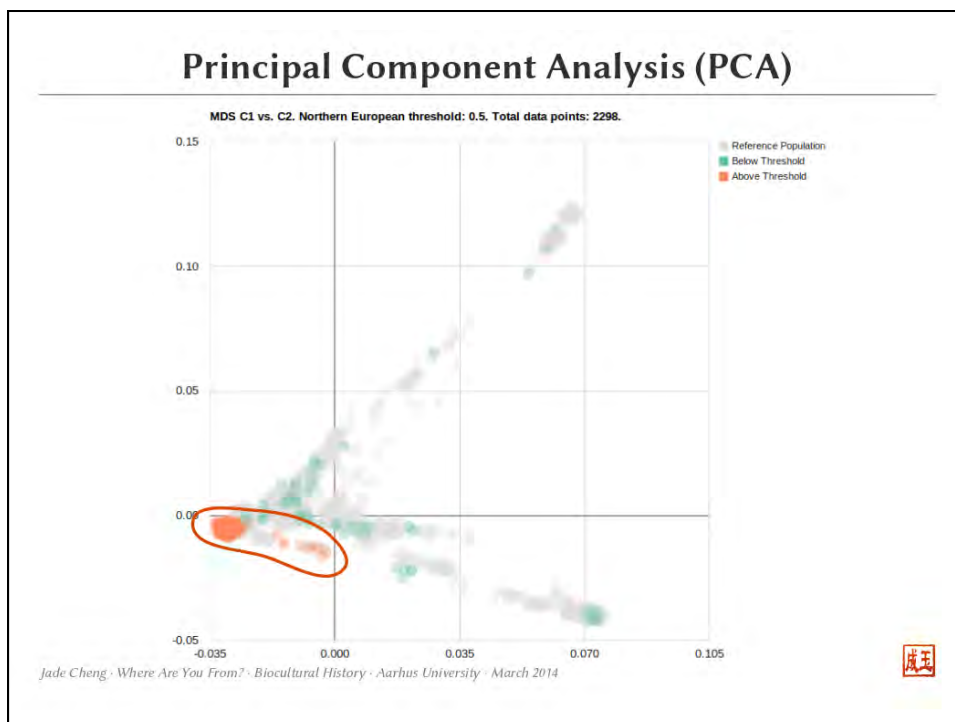


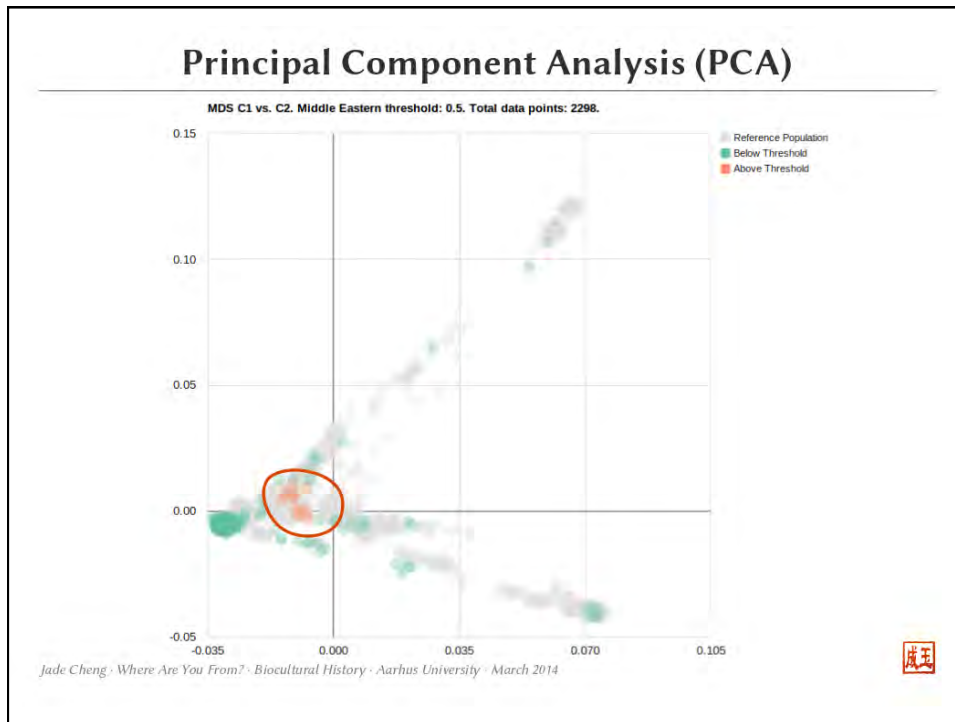




If we perform PCA analysis on our 723 genomes, each of which contains 600.000 SNPs, where would our data points cluster?

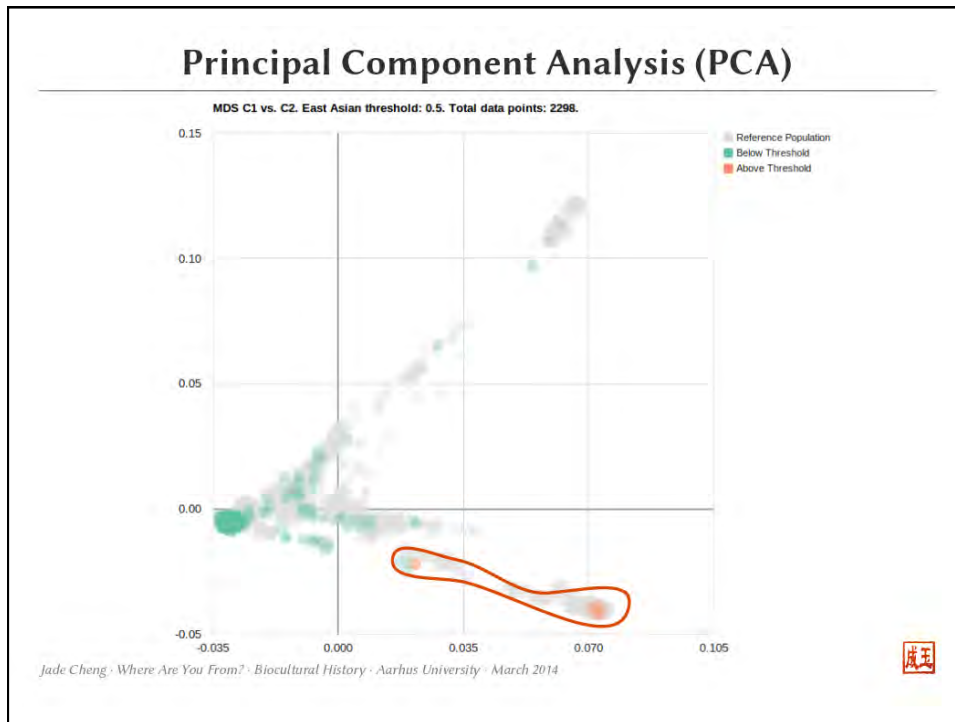
- A. European
- B. African
- C. Asian
- D. Results would not form any clusters





In our PCA results would we see any individuals with mostly east asian ancestry?

- A. Yes
- B. No



In our PCA results would we see any individuals with mostly Sub-Saharan ancestry?

- A. Yes
- B. No

